



**THE RITZ-CARLTON
RESIDENCES**

DUBAI, CREEKSIDE

RESIDENCES

— FLOOR PLANS SHEET —

G1 | G2



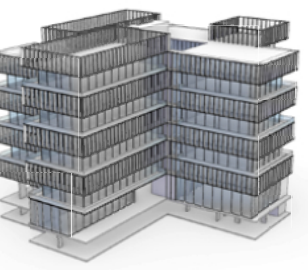
The Ritz-Carlton Residences, Dubai, Creekside are not owned, developed or sold by The Ritz-Carlton Hotel Company, L.L.C. or its affiliates ("Ritz-Carlton"). MAG of Life FZ-LLC uses The Ritz-Carlton marks under a license from Ritz-Carlton, which has not confirmed the accuracy of any of the statements or representations made herein.

All room sizes and floorplan measurements are approximate and may vary per unit. Floorplans and unit features are preliminary and proposed only. Developer reserves the right to modify, revise, change or withdraw any or all of same in its sole and absolute discretion and without prior notice. Depictions of furnishings, finishes, appliances, counters, soffits, floor coverings and other matters of detail, including, without limitation, items of finish and decoration are conceptual only and are not necessarily included in each Unit. Consult your Agreement and the Prospectus for items included with your Unit.



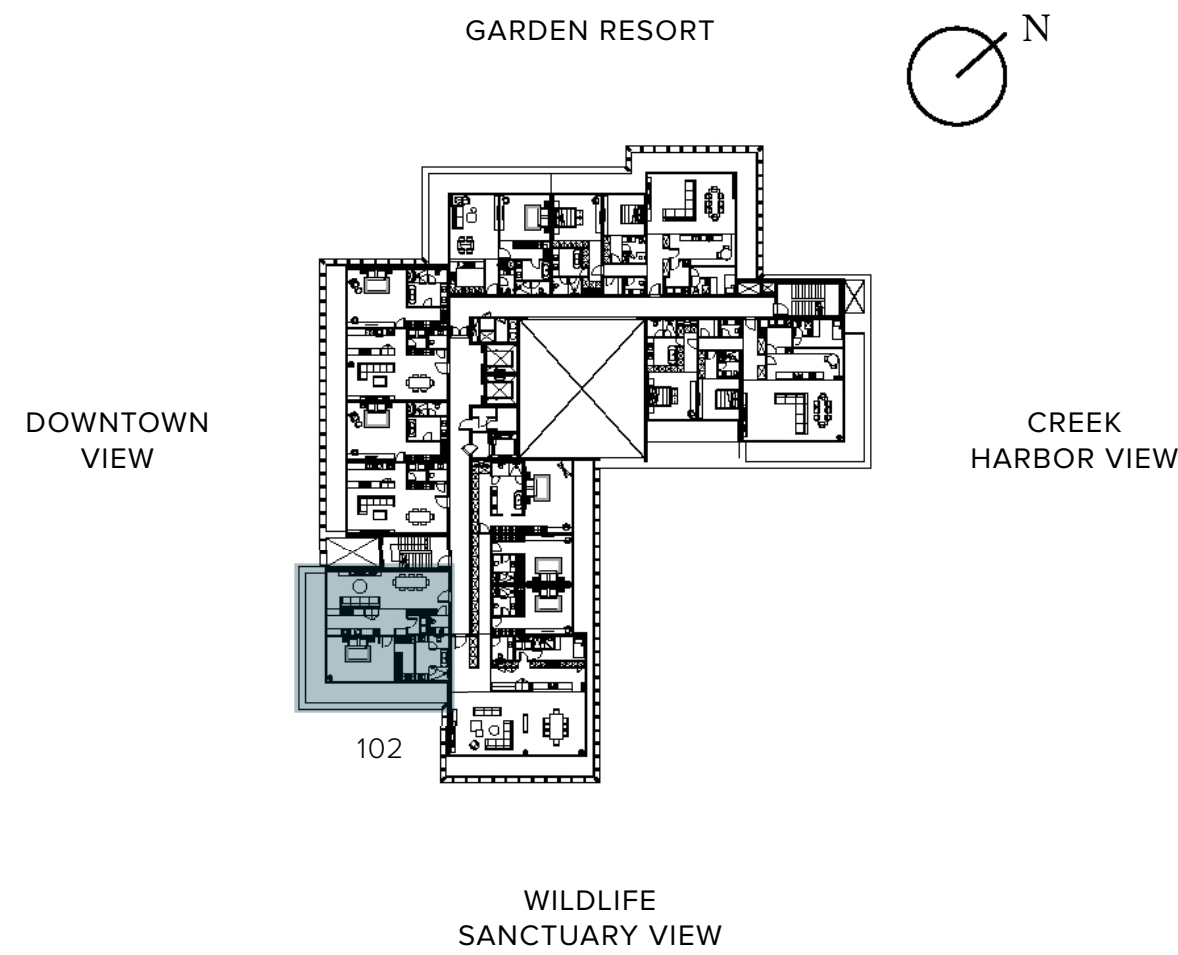
THE RITZ-CARLTON RESIDENCES

DUBAI, CREEKSIDE



One Bedroom

1 BEDROOM + 1.5 BATHROOMS



INTERIOR	120.0 SQ.M / 1,291.9 SQ.FT
EXTERIOR	43.0 SQ.M / 462.4 SQ.FT
TOTAL AREA	163.0 SQ.M / 1,754.3 SQ.FT
NO. OF UNITS	14



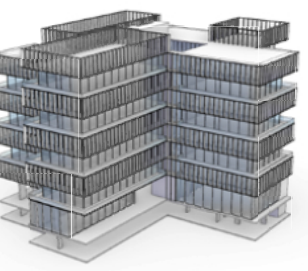
The Ritz-Carlton Residences, Dubai, Creekside are not owned, developed or sold by The Ritz-Carlton Hotel Company, L.L.C. or its affiliates ("Ritz-Carlton"). MAG of Life FZ-LLC uses The Ritz-Carlton marks under a license from Ritz-Carlton, which has not confirmed the accuracy of any of the statements or representations made herein.

MAG OF LIFE All room sizes and floorplan measurements are approximate and may vary per unit. Floorplans and unit features are preliminary and proposed only. Developer reserves the right to modify, revise, change or withdraw any or all of same in its sole and absolute discretion and without prior notice. Depictions of furnishings, finishes, appliances, counters, soffits, floor coverings and other matters of detail, including, without limitation, items of finish and decoration are conceptual only and are not necessarily included in each Unit. Consult your Agreement and the Prospectus for items included with your Unit.



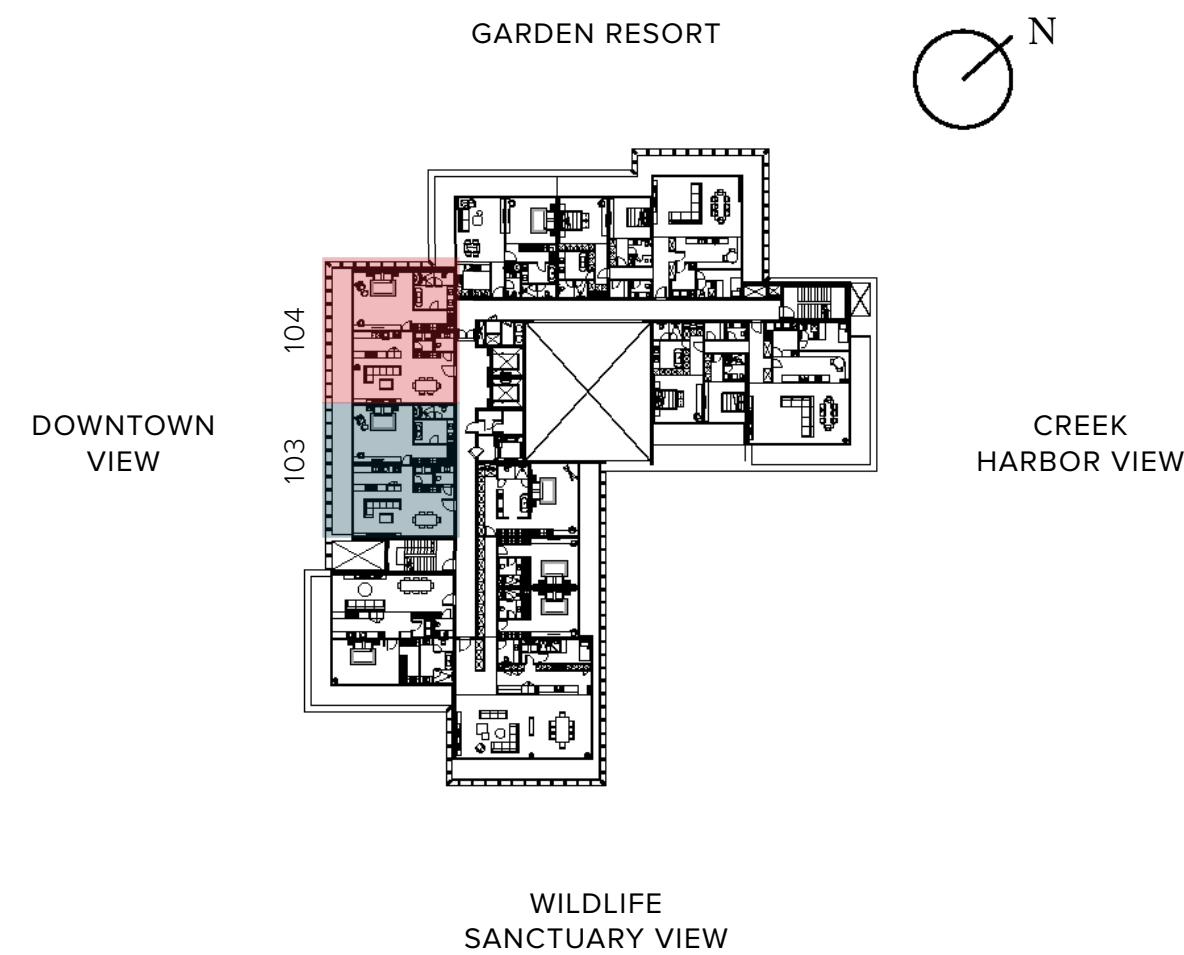
THE RITZ-CARLTON RESIDENCES

DUBAI, CREEKSIDE



One Bedroom

1 BEDROOM + 1.5 BATHROOMS



INTERIOR	118.4 SQ.M / 1,274.7 SQ.FT
EXTERIOR	23.0 SQ.M / 246.9 SQ.FT
TOTAL AREA	141.4 SQ.M / 1,521.6 SQ.FT
NO. OF UNITS	28



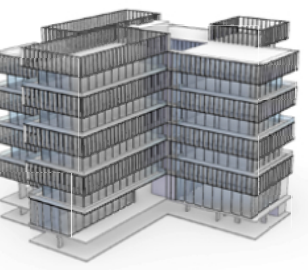
The Ritz-Carlton Residences, Dubai, Creekside are not owned, developed or sold by The Ritz-Carlton Hotel Company, L.L.C. or its affiliates ("Ritz-Carlton"). MAG of Life FZ-LLC uses The Ritz-Carlton marks under a license from Ritz-Carlton, which has not confirmed the accuracy of any of the statements or representations made herein.

MAG OF LIFE All room sizes and floorplan measurements are approximate and may vary per unit. Floorplans and unit features are preliminary and proposed only. Developer reserves the right to modify, revise, change or withdraw any or all of same in its sole and absolute discretion and without prior notice. Depictions of furnishings, finishes, appliances, counters, soffits, floor coverings and other matters of detail, including, without limitation, items of finish and decoration are conceptual only and are not necessarily included in each Unit. Consult your Agreement and the Prospectus for items included with your Unit.



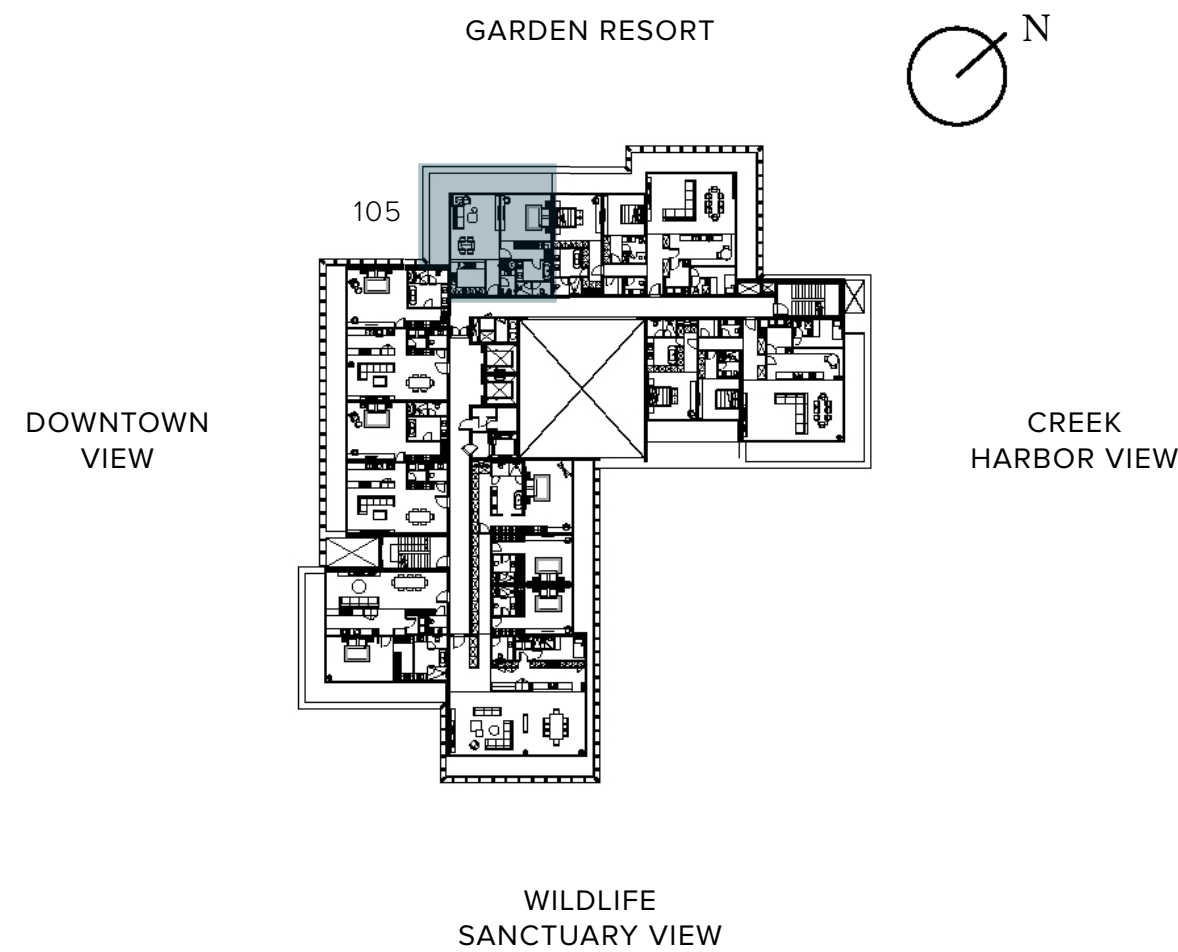
THE RITZ-CARLTON RESIDENCES

DUBAI, CREEKSIDE



One Bedroom

1 BEDROOM + 1.5 BATHROOMS



INTERIOR	91.0 SQ.M / 979.3 SQ.FT
EXTERIOR	33.4 SQ.M / 359.1 SQ.FT
TOTAL AREA	124.3 SQ.M / 1,338.4 SQ.FT
NO. OF UNITS	14



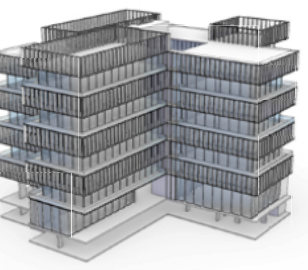
The Ritz-Carlton Residences, Dubai, Creekside are not owned, developed or sold by The Ritz-Carlton Hotel Company, L.L.C. or its affiliates ("Ritz-Carlton"). MAG of Life FZ-LLC uses The Ritz-Carlton marks under a license from Ritz-Carlton, which has not confirmed the accuracy of any of the statements or representations made herein.

MAG OF LIFE All room sizes and floorplan measurements are approximate and may vary per unit. Floorplans and unit features are preliminary and proposed only. Developer reserves the right to modify, revise, change or withdraw any or all of same in its sole and absolute discretion and without prior notice. Depictions of furnishings, finishes, appliances, counters, soffits, floor coverings and other matters of detail, including, without limitation, items of finish and decoration are conceptual only and are not necessarily included in each Unit. Consult your Agreement and the Prospectus for items included with your Unit.



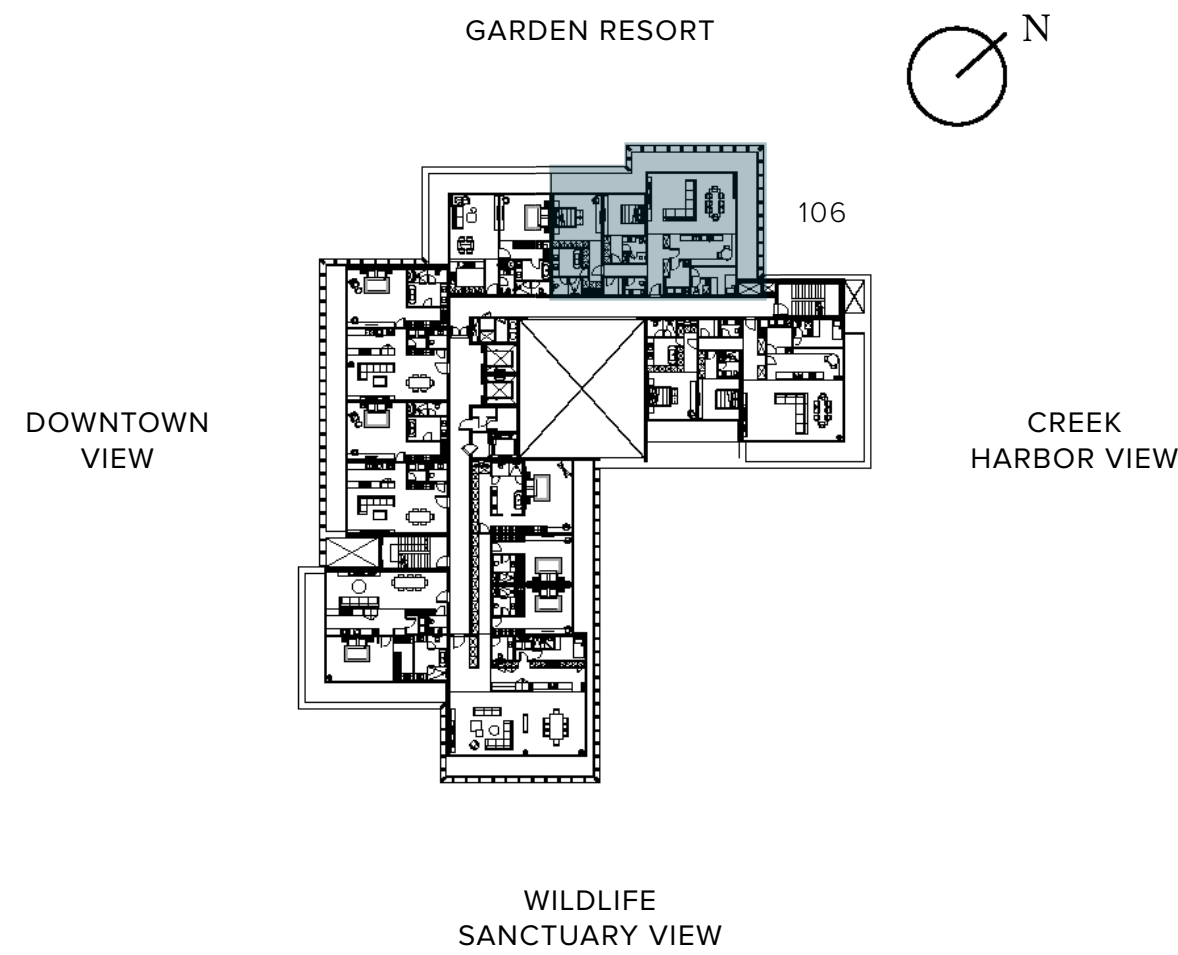
THE RITZ-CARLTON RESIDENCES

DUBAI, CREEKSIDE

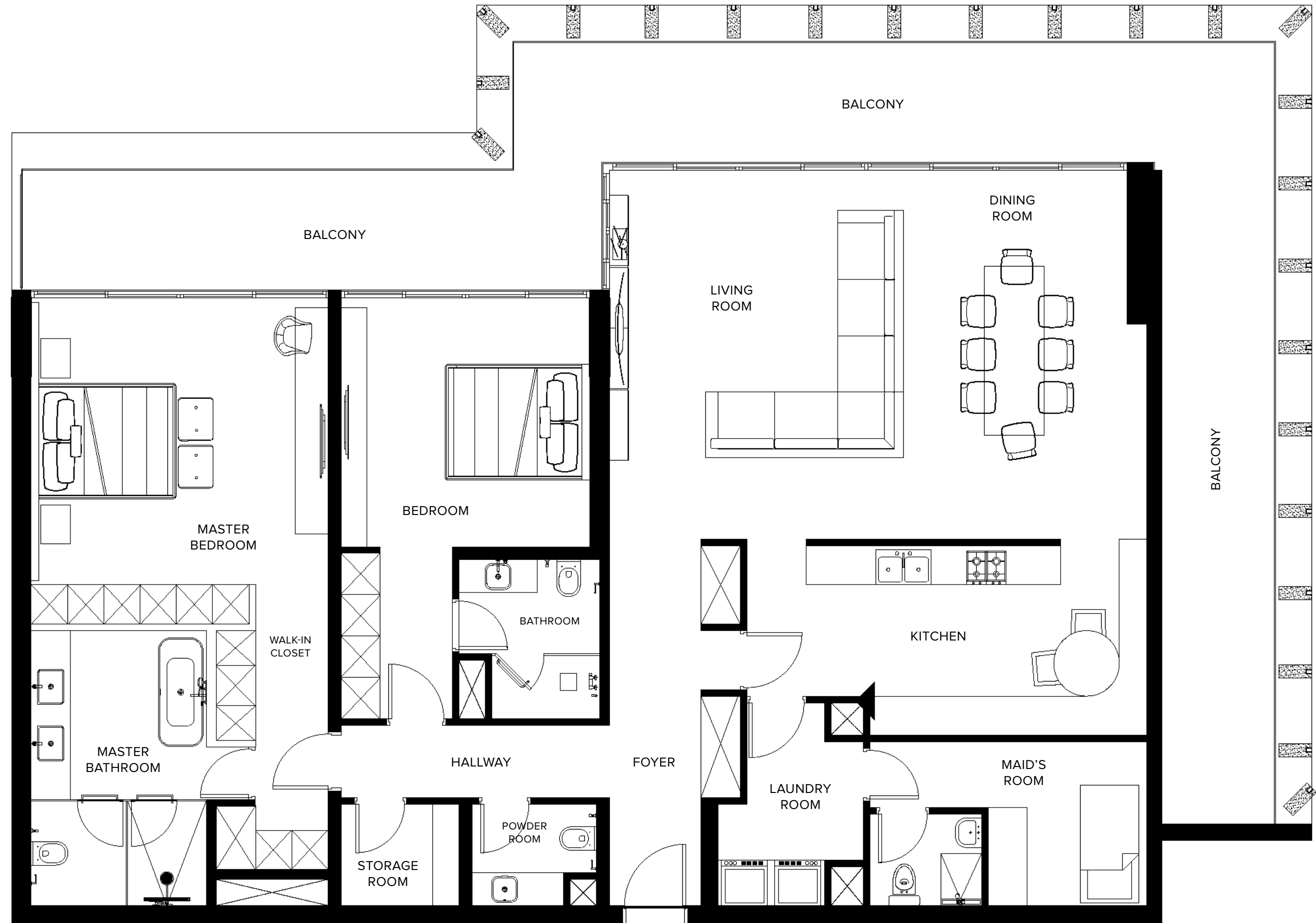


Two Bedroom

2 BEDROOM + MAID + 2.5 BATHROOMS



INTERIOR	181.4 SQ.M / 1,952.8 SQ.FT
EXTERIOR	55.8 SQ.M / 600.3 SQ.FT
TOTAL AREA	237.2 SQ.M / 2,553.1 SQ.FT
NO. OF UNITS	14



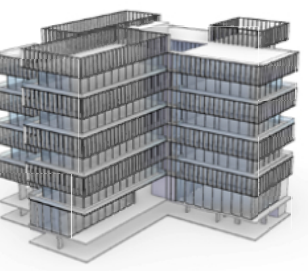
The Ritz-Carlton Residences, Dubai, Creekside are not owned, developed or sold by The Ritz-Carlton Hotel Company, L.L.C. or its affiliates ("Ritz-Carlton"). MAG of Life FZ-LLC uses The Ritz-Carlton marks under a license from Ritz-Carlton, which has not confirmed the accuracy of any of the statements or representations made herein.

MAG OF LIFE All room sizes and floorplan measurements are approximate and may vary per unit. Floorplans and unit features are preliminary and proposed only. Developer reserves the right to modify, revise, change or withdraw any or all of same in its sole and absolute discretion and without prior notice. Depictions of furnishings, finishes, appliances, counters, soffits, floor coverings and other matters of detail, including, without limitation, items of finish and decoration are conceptual only and are not necessarily included in each Unit. Consult your Agreement and the Prospectus for items included with your Unit.



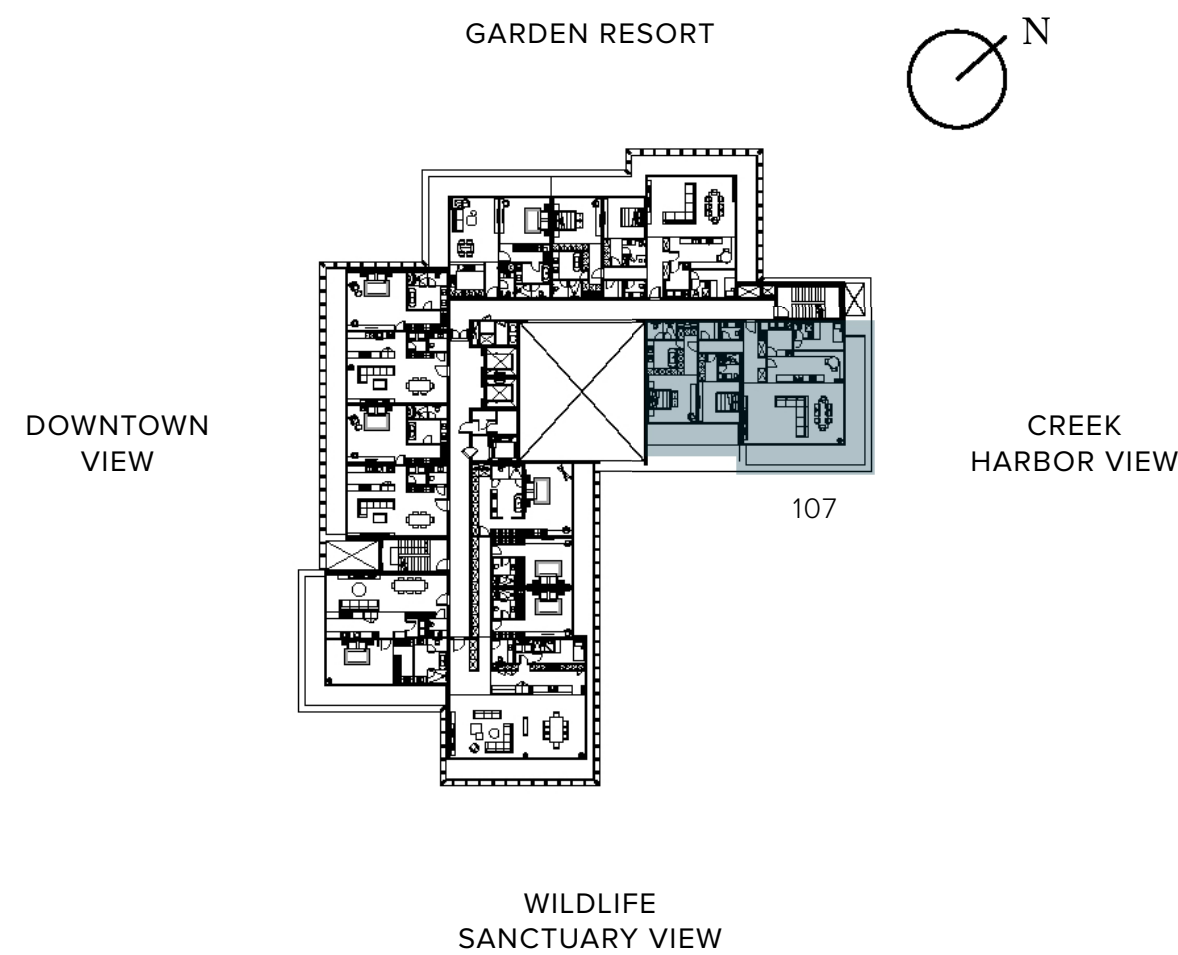
THE RITZ-CARLTON RESIDENCES

DUBAI, CREEKSIDE



Two Bedroom

2 BEDROOM + MAID + 2.5 BATHROOMS



INTERIOR	196.8 SQ.M / 2,117.9 SQ.FT
EXTERIOR	55.7 SQ.M / 599.1 SQ.FT
TOTAL AREA	252.4 SQ.M / 2,717.0 SQ.FT
NO. OF UNITS	14



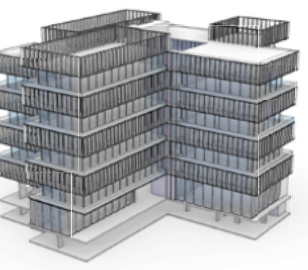
The Ritz-Carlton Residences, Dubai, Creekside are not owned, developed or sold by The Ritz-Carlton Hotel Company, L.L.C. or its affiliates ("Ritz-Carlton"). MAG of Life FZ-LLC uses The Ritz-Carlton marks under a license from Ritz-Carlton, which has not confirmed the accuracy of any of the statements or representations made herein.

MAG OF LIFE All room sizes and floorplan measurements are approximate and may vary per unit. Floorplans and unit features are preliminary and proposed only. Developer reserves the right to modify, revise, change or withdraw any or all of same in its sole and absolute discretion and without prior notice. Depictions of furnishings, finishes, appliances, counters, soffits, floor coverings and other matters of detail, including, without limitation, items of finish and decoration are conceptual only and are not necessarily included in each Unit. Consult your Agreement and the Prospectus for items included with your Unit.



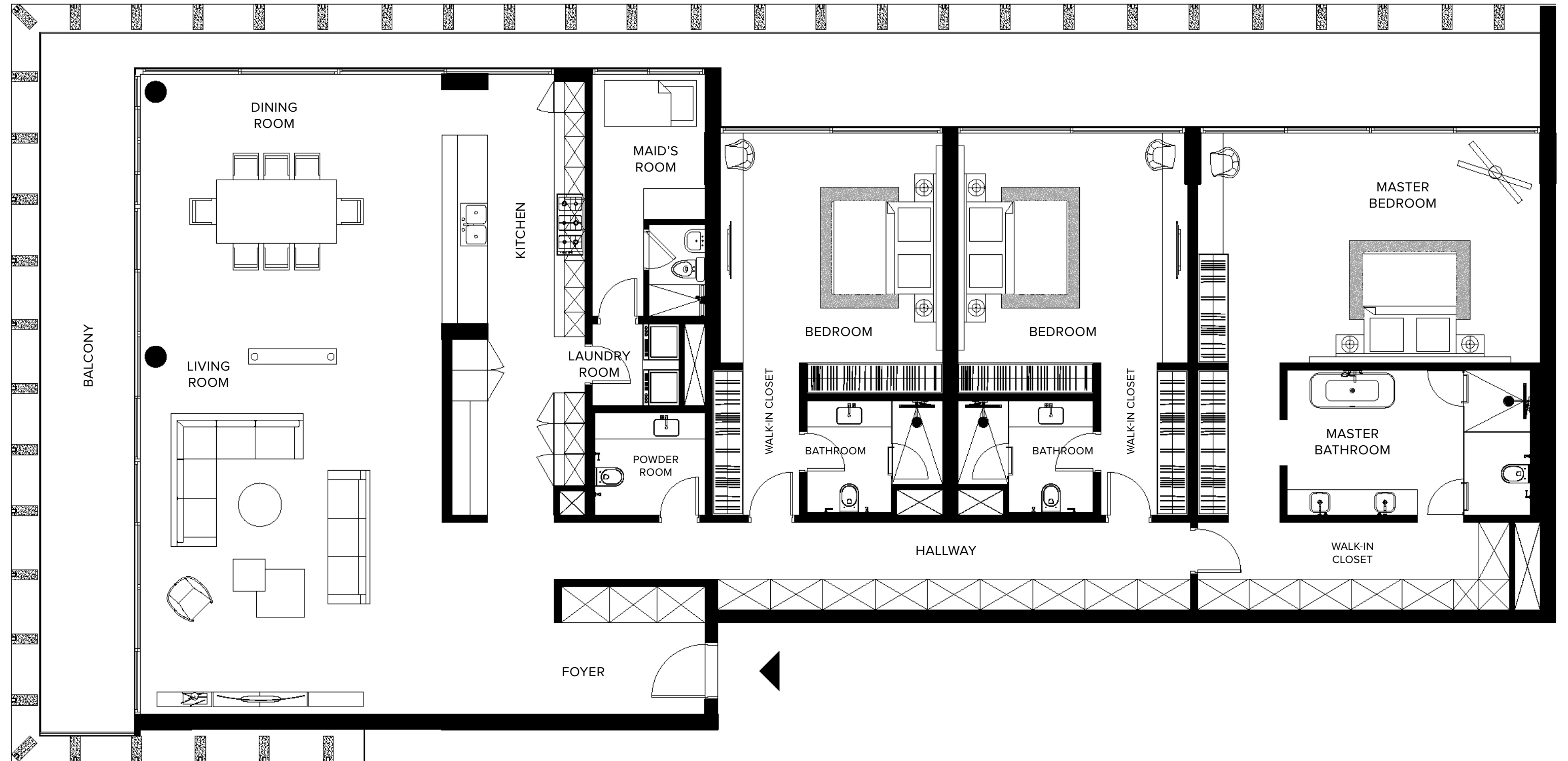
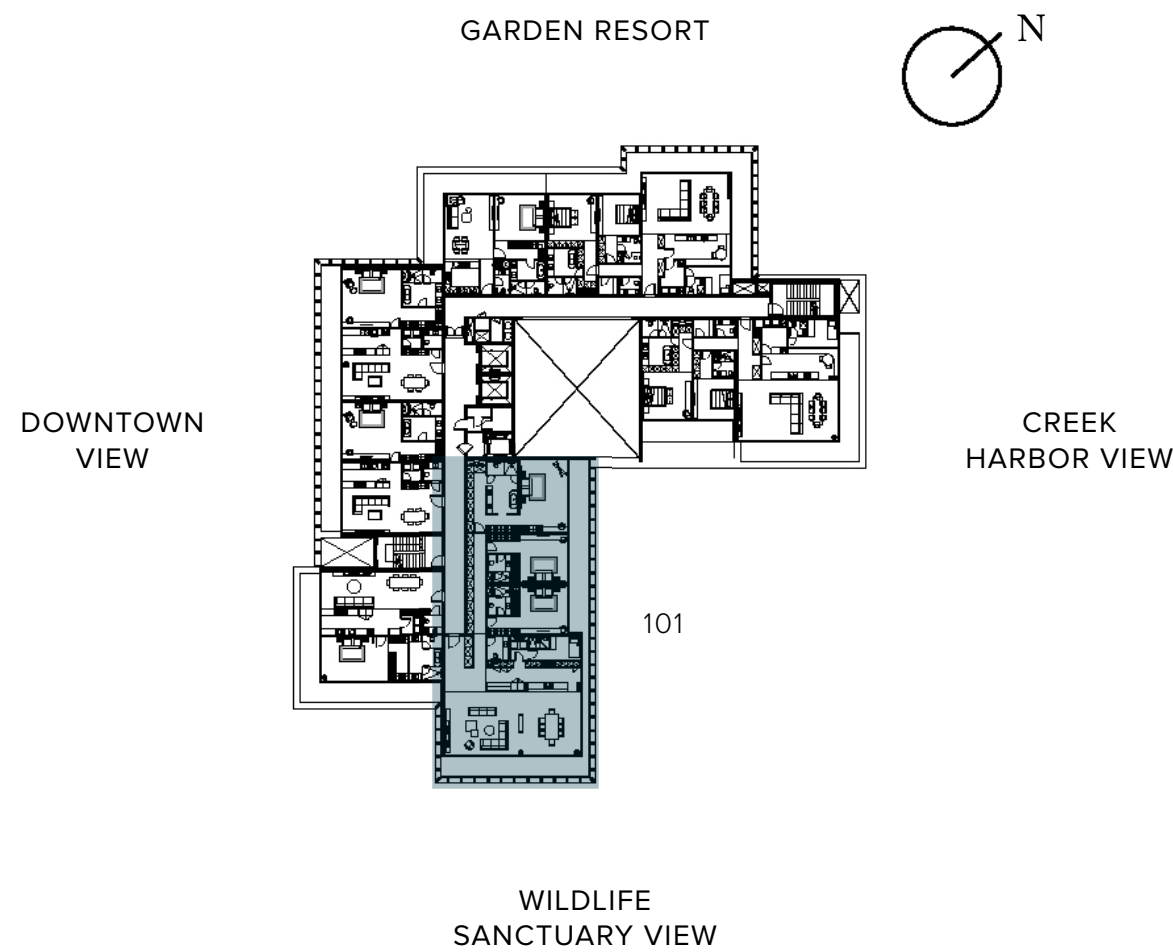
THE RITZ-CARLTON RESIDENCES

DUBAI, CREEKSIDE



Three Bedroom

3 BEDROOM + MAID + 3.5 BATHROOMS

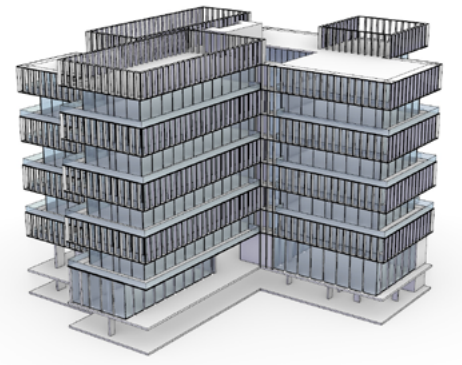


INTERIOR	301.4 SQ.M / 3,243.7 SQ.FT
EXTERIOR	63.2 SQ.M / 680.3 SQ.FT
TOTAL AREA	364.6 SQ.M / 3,924.0 SQ.FT
NO. OF UNITS	14

The Ritz-Carlton Residences, Dubai, Creekside are not owned, developed or sold by The Ritz-Carlton Hotel Company, L.L.C. or its affiliates ("Ritz-Carlton"). MAG of Life FZ-LLC uses The Ritz-Carlton marks under a license from Ritz-Carlton, which has not confirmed the accuracy of any of the statements or representations made herein.

MAG OF LIFE All room sizes and floorplan measurements are approximate and may vary per unit. Floorplans and unit features are preliminary and proposed only. Developer reserves the right to modify, revise, change or withdraw any or all of same in its sole and absolute discretion and without prior notice. Depictions of furnishings, finishes, appliances, counters, soffits, floor coverings and other matters of detail, including, without limitation, items of finish and decoration are conceptual only and are not necessarily included in each Unit. Consult your Agreement and the Prospectus for items included with your Unit.

By the numbers



GENERAL

BUILDINGS	G1 G2
BUILDING LEVELS	GROUND (Lobby Extended 12m Height) + 7 RESIDENTIAL FLOORS AND BASEMENT
NO. OF UNITS	98
• ONE BEDROOM	56
• TWO BEDROOM	28
• THREE BEDROOM	14

The Ritz-Carlton Residences, Dubai, Creekside are not owned, developed or sold by The Ritz-Carlton Hotel Company, L.L.C. or its affiliates ("Ritz-Carlton"). MAG of Life FZ-LLC uses The Ritz-Carlton marks under a license from Ritz-Carlton, which has not confirmed the accuracy of any of the statements or representations made herein.

MAG OF LIFE All room sizes and floorplan measurements are approximate and may vary per unit. Floorplans and unit features are preliminary and proposed only. Developer reserves the right to modify, revise, change or withdraw any or all of same in its sole and absolute discretion and without prior notice. Depictions of furnishings, finishes, appliances, counters, soffits, floor coverings and other matters of detail, including, without limitation, items of finish and decoration are conceptual only and are not necessarily included in each Unit. Consult your Agreement and the Prospectus for items included with your Unit.



THE RITZ-CARLTON RESIDENCES

DUBAI, CREEKSIDE



The Ritz-Carlton Residences, Dubai, Creekside
Sales Gallery, Podium Level
Gate Village 11, Dubai International Financial Centre (DIFC), Dubai

*Click or Scan QR Code
for location on maps*

www.theresidencesdubaicreek.com
info@theresidencesdubaicreek.com

The Ritz-Carlton Residences, Dubai, Creekside are not owned, developed or sold by The Ritz-Carlton Hotel Company, L.L.C. or its affiliates ("Ritz-Carlton"). MAG of Life FZ-LLC uses The Ritz-Carlton marks under a license from Ritz-Carlton, which has not confirmed the accuracy of any of the statements or representations made herein.